

SCOOP OPS

THE SCOOP HANDLER

NO MORE LOST SCOOPS
EASY OPEN MESS FREE SCOOPING



Use tips

- Tap container at 45° to create a larger well in the powder on one side of the container.
- Pick the appropriate size holder — small or large Mini or Max — for your container.
- Don't sweat scoop's position in the powder. The holder and knob's magnets will chase each other and stay aligned.
- Hang the holder and scoop assembly on container's lip using built-in hook. Hover cap and knob assembly past holder top to pick up scoop. Then place cap on container. Tighten, using knob.
- Rely on knob for opening and closing large tops/lids. It will evenly distribute your force and prevent distortion of threads, making it easier to secure tops/lids.
- Holder care and cleaning: Avoid dropping from heights. To clean: disassemble, wash with warm soapy water, rinse, dry and reassemble.
- Cut down long scoop handles if need be (some supplied scoops have handles that only fit diagonally in container).
- Keep backing sheet to recover the adhesive, after washing and drying, to store knob.

Use instructions:

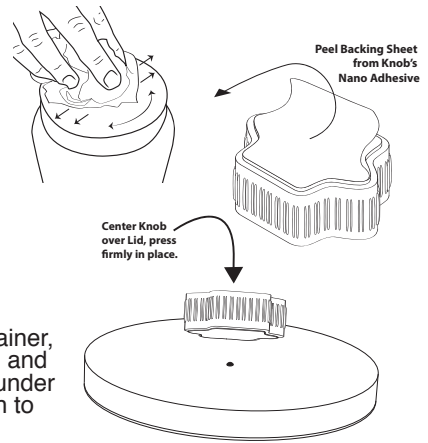
Knob:

Dry wipe any dust from from container top.

Peel off backing sheet from adhesive on knob base.

Centering as accurately as possible, firmly press knob onto container lid (don't worry about surface irregularities).

When it's time to move knob to a new container, just pry up on knob (don't twist, just pry up) and remove. Then simply rinse knob adhesive under running water, let dry completely and attach to new lid.



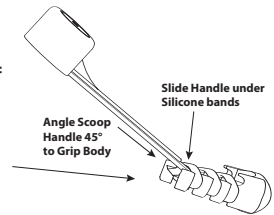
Grips:

Place scoop handle into holder. Holder design accommodates most every scoop handle. *See following techniques...*

Small Grip: (containers under 5" tall)

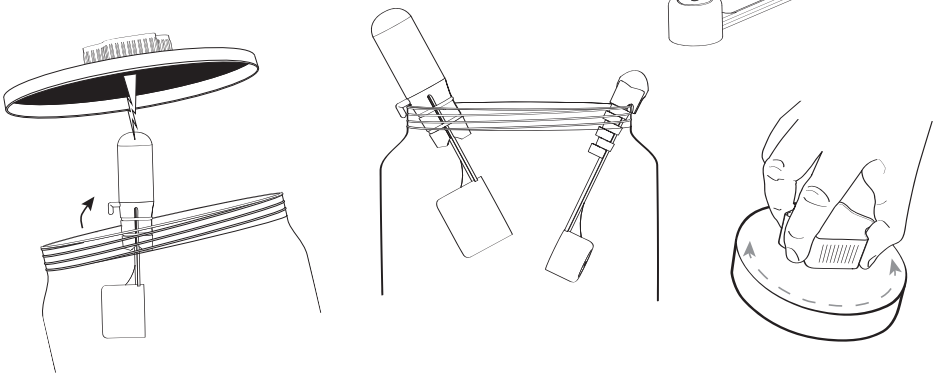
Scoop handle may be placed in top or bottom slots of holder — facing up or down — depending on scoop's handle design.

Angle scoop handle at 45° to holder body to start handle under bands. Maintain slight angle as you slip handle underneath bands.



Large Grip:

Position scoop handle so its ribs (if any) align with slots in holder. Slide scoop handle into holder until it bottoms.



Tiny parts. KEEP OUT OF REACH of small children.
Contains ferrous material DO NOT MICROWAVE.
Built with food safe PLA and Silicone materials.

By nature, 3D printing is porous, the 3D manufactured version of this product is for use with dry materials in dry environments, keep clean and dry.

These limited market study sets were 3D printed with love in Atlantic Highlands NJ

ScoopOps and related art TM and © of Epiphany Group • US Patents pending #s 63/582,355, 29/912,093
PRC Patent # ZL 202430128054.0